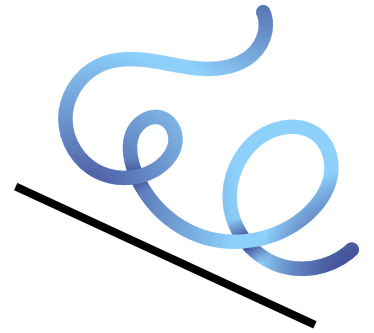


20
26



FORMAL RECRUITMENT



BOOKLET

Table of Contents

- 2) Welcome To The ISC**
- 3) Pillars Of The ISC**
- 4) Recruitment Schedule**
- 5) Sorority House Map**
- 6) Important Terms**
- 7) Regulations**
- 8) Contacts**
- 9) The Pi Chi Program**
- 10) Recruitment Process**
- 11) Attire**
- 12) PNM Contract**
- 13) Scholarships**
- 14) Chapter Information**

Welcome To The ISC!

We are currently the largest group of women on Grounds with over 2,700 members in 14 sororities. The ISC at the University of Virginia strives to uphold the values of [integrity](#), [loyalty](#), [compassion](#), and [humility](#), upon which our organization was founded. Sorority involvement enhances the experience of all current and future sorority women by providing [resources](#) and [opportunities](#) for [scholarship](#) [leadership](#), [service](#), and [social development](#) in an atmosphere conducive to friendship and sisterhood.

Mission Statement

The Mission of the Inter-Sorority Council is the [empowerment of a diverse group of women through the promotion of accessibility, academic excellence, inclusivity, sisterhood, wellness, and mutual respect and accountability](#). We strive to uphold the Inter-Sorority Council's historic tenets of support and service by connecting with local and national causes to generate a positive impact on the University of Virginia, the Charlottesville community, and organizations on a national scale. Through the promotion of these values, the Inter-Sorority Council seeks to [create a network of support and environment of growth, as well as inspiring community action](#).

Panhellenic Creed

We, as Undergraduate Members of women's fraternities, stand for good scholarship, for guarding of good health, for [maintenance of fine standards, and for serving, to the best of our ability, our college community](#). Cooperation for furthering fraternity life, in harmony with its best possibilities, is the ideal that shall guide our fraternity activities. We, as Fraternity Women, stand for service through the development of character inspired by the close contact and deep friendship of individual fraternity and Panhellenic life. The opportunity for [wide and wise human service, through mutual respect and helpfulness](#), is the tenet by which we strive to live.



Pillars of the Inter-Sorority Council (ISC)

Student Leadership

ISC women have access to student leadership opportunities within their chapters, the ISC community, and on Grounds



Sisterhood

When a student joins an ISC sorority, she joins not just a single chapter but a lifetime commitment to sisterhood. Sisterhood is the foundation of the Panhellenic inter/national organizations.



Service

Service is an integral part of the ISC. All chapters of the ISC support a national cause or charity through weekly service opportunities and philanthropy events.

Support

The ISC Executive Board and all ISC chapters work to serve community members through various women's concerns programming. Additionally, all members of the Greek community strive to support each other daily.



Scholarship

Scholarship is a priority of the ISC. ISC women consistently finish each semester with a community GPA that is higher than the overall women's GPA at UVA.

Recruitment Schedule

JANUARY 2026

SUN	MON	TUES	WED	THURS	FRI	SAT
4	5	6	7 PNM Orientation	8 Round Robins (Day 1)	9 Round Robins (Day 2)	10 Philanthropy (Day 1)
11 Philanthropy (Day 2)	12 FDOC (First Day of Classes)	13	14	15	16 House Tours	17 Preferences
18 Bid Day!						

TUES.
6

PNM Orientation

THURS.
8

Round Robins Day 1

FRI.
9

Round Robins Day 2

SAT.
10

Philanthropy Day 1

SUN.
11

Philanthropy Day 2

FRI.
16

House Tours

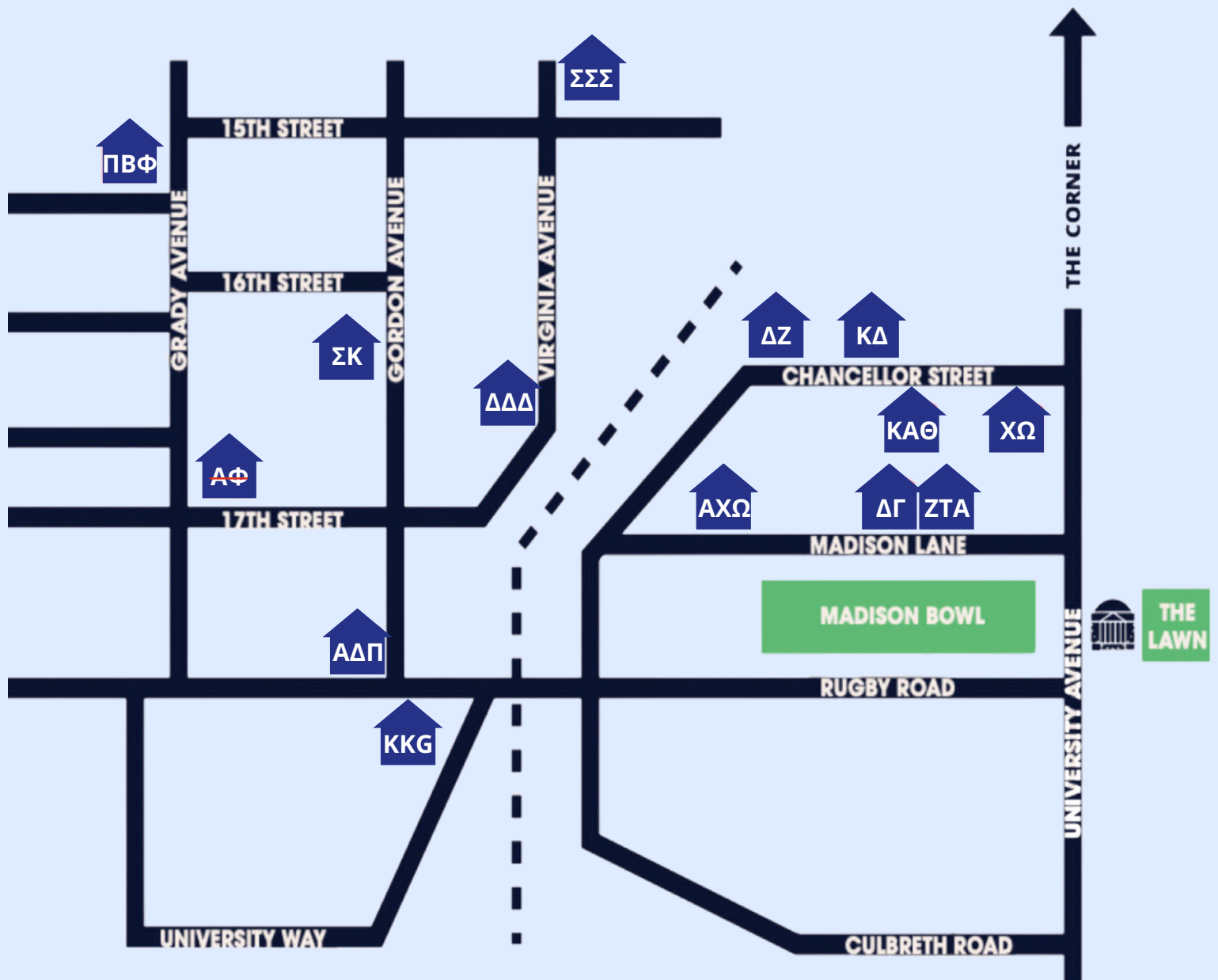
SAT.
17

Preferences

SUN.
18

Bid Day!

Sorority House Map



ΑΧΩ: Alpha Chi Omega

ΑΔΠ: Alpha Delta Pi

ΑΦ: Alpha Phi

ΧΩ: Chi Omega

ΔΔΔ: Delta Delta Delta

ΔΓ: Delta Gamma

ΔΖ: Delta Zeta

ΚΑΘ: Kappa Alpha Theta

ΚΔ: Kappa Delta

ΚΚΓ: Kappa Kappa Gamma

ΠΒΦ: Pi Beta Phi

ΣΚ: Sigma Kappa

ΣΣΣ: Sigma Sigma Sigma

ΖΤΑ: Zeta Tau Alpha

Important Terms

Potential New Member (PNM):

A student participating in formal recruitment. Once a student joins a chapter, she becomes a “new member.”

Panhellenic Counselor (PI CHI):

A chapter women who disaffiliates for the duration of Formal Recruitment in order to help PNMs through the process. She serves as an ambassador of ISC and may act as an advocate on behalf of a PNM.

Round:

The four different segments of Formal Recruitment (Round Robins, Philanthropy, House Tours, and Preferences)

Party/Parties:

The rounds during Formal Recruitment of scheduled times when potential new members will visit houses.

Bid Day:

The event celebrating the completion of Formation Recruitment! This will include a range of fun events and the opportunity to get to know your new found sisterhood.

Quota:

The number of potential new members a chapter may offer bids as set to include as many women as possible.

Regulations

CONTACT POLICY

From the conclusion of the last Preference party on January 17, 2026 until Bid Cards are opened, the ISC practices **strict silence between the chapters and PNMs**. This means no communication may occur between chapter women and PNMs outside of rounds. Communication includes talking, email, phone calls, texting, Instagram DMs, etc. If any Greek women attempts to break this policy, please report it to your Pi Chi or VP of Recruitment.

ALCOHOL POLICY

The use and/or consumption of alcoholic beverages is strictly prohibited during Recruitment, beginning January 8th until 8 am January 18th (day after Bid Day). This includes going to bars, fraternities, or social events near or around the Corner area. Similarly, chapters may not supply alcohol at any Recruitment event. Any PNM that violates the alcohol policy risks immediate removal from Recruitment. Report any violations to your Pi Chi or ISC Recruitment Executive Team.

HAZING

Hazing in any form is not tolerated at the University of Virginia. Hazing refers to any activity that is expected or required of someone to join or maintain status within a group that humiliates, degrades, or risks emotional and/or physical harm. For more information, please visit www.virginia.edu/hazing.

BID PROMISING

Bid promising refers to a Greek woman **promising guaranteed admittance to a chapter before Bid Cards are handed out**. This is a significant violation on the sorority's part. It is inappropriate for any woman to promise what she cannot guarantee and, in the process, unduly influence the PNM's recruitment experience. Report violations to your Pi Chi or ISC Recruitment Executive Team.

GIFTS

No PNM may accept any article from any chapter or chapter member during recruitment. This policy is meant to ensure that PNMs can focus on having meaningful conversations.

ISC Recruitment Executive Team



Meredith Collier

President

xft9zm@virginia.edu



Mary Jane Erskin

VP Judiciary

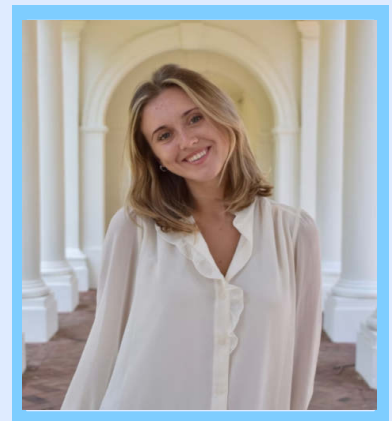
jgv9eh@virginia.edu



Haley Kim

VP Recruitment (Chapters)

hat3ux@virginia.edu



Cailee Halligan

VP Recruitment (PNMs)

smv8td@virginia.edu



Veronica Torres

**VP Community and
Belonging**

txc6tt@virginia.edu



Liz Drauszewski

VP Finance

uvaiscvpf@gmail.com



Phoebe Zamoff

Pi Chi Co-Director

pad9hv@virginia.edu



Emelia Gibbs

Pi Chi Co-Director

sjc6ny@virginia.edu



Rachel Dumis

Computer Director

ykr2tc@virginia.edu

The Pi Chi Program

Dear Potential New Members,

Welcome to Formal Recruitment! We are beyond excited that you are considering joining our Greek community. As Pi Chi Co-Directors, we are responsible for training the Panhellenic Counselors (Pi Chis) and preparing them to serve as unbiased mentors, supporting you throughout the Formal Recruitment process. Pi Chis are **disaffiliated members of the Inter-Sorority Council (ISC) who were selected through a competitive application process**. Over the past semester, they have undergone extensive training to guide and support all participants during Recruitment. They are eager to assist you in any way they can and are invaluable resources for advice, encouragement, and navigating challenging decisions you might have through the Recruitment process.

Along with the rest of the Recruitment Executive Team, **Pi Chis are here to ensure you have a smooth and positive experience—not just during Formal Recruitment but even afterward**. We encourage you to reach out to any Pi Chi with questions or concerns. Their role is to help you feel comfortable, confident, and supported every step of the way.

If you have any questions about the Pi Chi program or your Recruitment experience, please do not hesitate to contact us. Your happiness and safety are our top priorities, and we are here to help.

We are confident that with the support of our incredible Pi Chis, you will have the best Formal Recruitment experience possible.

Sincerely,

Phoebe Zamoff and Emelia Gibbs, Pi Chi Co-Directors

Questions to ask your Pi Chi:

- ② What do I wear?
- ② What time do I have to be at a party?
- ② What questions should I ask in a round?
- ② What if I can't decide which chapters to return to?
- ② What if I am torn between two chapters?

Recruitment Process

Party Duration

Max # of Invites

ROUND ROBINS

25 MINS

ALL

Round Robins gives you the opportunity to meet all participating sororities over two days. For each round, you will spend 25 minutes with women from one chapter and have short, informal conversations with them. Each sorority looks forward to getting to know you! Please feel free to ask the women about their chapter. Maintained and cleaned datasets for the ST Search and Consulting team, ensuring accuracy, completeness, and consistency across multiple data sources.

PHILANTHROPY

30 MINS

MAX 10

You will have the opportunity to visit up to 10 chapters and learn about each chapter's national philanthropy and local events. You will watch a brief video about the philanthropic organization and then hear from women in the chapter about their involvement with their philanthropy. You will spend a few minutes speaking with the women from the chapter after this.

HOUSE TOURS

45 MINS

MAX 6

You will have the opportunity to visit up to 6 chapters and go on a tour of their house. You will have more time to speak with chapter women, ask more in-depth questions, and connect on a more personal level. Use this time to determine if your values align with those of the chapter. You will spend 45 minutes touring the chapter house and speaking to chapter women.

PREFERENCES

1 HOUR

MAX 2

Preferences, known as "prefs," is the most serious day of Formal Recruitment. You will visit up to 2 chapters for 60 minutes each. A woman from each chapter whom you may have met during the week will greet you and speak with you about sisterhood and what her chapter means to her. As you listen to their stories, think about the chapter's values, and if you see yourself in that chapter.

A NOTE ON MUTUAL SELECTION

Formal Recruitment at the University of Virginia uses a "mutual selection" process **where both chapter selections and PNM rankings are considered in creating a PNM's Recruitment schedule and bid.** This process has been implemented on a national level to ensure that the highest number of women possible are matched to chapters. The process works by scheduling all PNMs to see all chapters in the first round of Recruitment and steadily decreasing the number of chapters in later rounds of the process. **This allows the PNMs to focus more intently on a smaller number of chapters at the end of the process versus the beginning.**

Attire

We encourage you to wear what you feel most comfortable in and is the best expression of yourself! Each round is more dressy than the last.

The following are mere guidelines:

ROUND ROBINS:

Nice outfit you might wear to class. The ISC will supply a T-shirt. Feel free to wear the same outfit both days- you won't see the same people twice!



PHILANTHROPY:

Outfit you might wear to a nice lunch. Jeans are okay!



HOUSE TOURS:

Outfit you might wear to a nice dinner. For example, a long sleeved dress, dress skirt or pants, and blouse.



PREFERENCES:

Semi-formal outfit. For example, a nice dress, jumpsuit, or blouse and pants. Think of this as "cocktail" attire.



PNM Contract

In order to participate in the Formal Recruitment Process, all Potential New Members (PNMs) must sign in the PNM contract. The contract states the following:

- ② I am not, nor have I ever been, an initiated member of an inter/national sorority.
- ② I pledge to behave respectfully towards myself, other PNMs, chapter members, and university staff at all times. I alone am responsible for my behavior and will act appropriately at all times. (Reminder: If you can't be respectful to everyone during recruitment you will be removed from recruitment, there is a zero tolerance policy.)
- ② I will attend all Recruitment events to which I receive an invitation.
- ② I understand that if a situation occurs at a chapter or with an ISC chapter woman that makes me uncomfortable or is against Recruitment Regulations, I will report the incident to my Pi Chi. I understand that reporting a judicial violation will remain confidential and will not negatively impact my chances of membership with any chapter.
- ② I understand that consumption of alcohol and socializing with men are not permitted during the Recruitment process and Bid Day activities.
- ② I will adhere to the National Panhellenic Conference policy regarding strict silence. Strict silence starts at the conclusion of the last Preferences party and ends once Bid Cards are opened. During this time, there will be no conversation or contact between PNMs and sorority members, alumnae, or chapter representatives except at specified ISC Recruitment events. PNMs may not discuss sorority members or chapters with other PNMs. As a PNM, I will adhere to this policy, and I understand that strict silence allows PNMs to make decisions free from outside pressures and the opinions of others.
- ② I understand that if I am matched with a chapter and receive a bid, I am bound to that chapter and considered ineligible for an invitation to membership from any other ISC chapter for one calendar year.
- ② I understand that PNMs who are reported to be in violation of any of the Recruitment Regulations will be subject to a Recruitment Judicial Board hearing. Hearings will be addressed on a case-by-case basis and may result in dismissal from the ISC Formal Recruitment process at the discretion of the Judicial Board.

Scholarships

The ISC allocates around \$9000+ per semester to scholarships.
Each scholarship is \$500.

Scholarships may differ between semesters and chapters as seen below.

FALL

The ISC typically offers scholarships for current members as well as scholarships particularly for women of underrepresented groups in Greek Life (MOURG scholarships)

SPRING

New member scholarships, current member scholarships, and MOURG scholarships are offered during the spring semester.

RECRUITMENT

The ISC offers PNM scholarships for women who will rush in January. Applications will close after rush (date TBD). Fill out this link if interested:
<https://forms.office.com/r/hADSNLvBy>

INDIVIDUAL CHAPTER

Many individual chapter also offer merit and need based scholarships. Check each chapter's website and descriptive page for more information.

CHAPTER INFO!



ALPHA CHI OMEGA

Founded at UVA: April 19, 1980

Location: 158 Madison Lane

Colors: Scarlet and Olive Green

Symbol: Lyre

Nickname: Alpha Chi, AXO

Philanthropy: Our national philanthropy is domestic violence awareness, which we bring to the Charlottesville community through fundraising and awareness events for the local shelter for domestic violence survivors, Shelter for Help in Emergency (SHE)

Minimum GPA: 2.75

Scholarships: Education grant from AXO National Headquarters (up to \$1000) ever semester

Catering: Our catering is through College Fresh, a company where meals are served for girls that live in the house and other members that opt into the meal plan. College Fresh provides fresh meals daily with options available for any necessary dietary restrictions. Our catering plan also offers weekly dinners for the entire chapter on Monday nights.

Dues:

New Member Fees: \$1273.00

Out of House Dues: \$947.00/Fall; \$947.00/Spring

In House Dues: \$4862.00/Fall; \$4862.00/Spring

Fun fact: AXO was originally founded as a musical fraternity!



ALPHA DELTA PI

Founded at UVA: 1977

Location: 502 Rugby Road

Colors: White and Azure Blue

Symbol: Diamond

Nickname: ADPi

Philanthropy: Ronald McDonald House Charities

Minimum GPA: 2.6

Scholarships: National Alpha Delta Pi scholarships and scholarships that come from our chapter specifically.

Catering: House girls receive dinner Monday - Thursday, brunch Friday, and continental breakfast Monday - Sunday.

Dues:

New Member Fees: \$1300.50

Out of House Dues: \$923.75/Fall; \$902.00/Spring

In House Dues: \$4708.75/Fall; \$5137.00/Spring

Fun fact: Alpha Delta Pi holds the record for single biggest day fundraising event in UVA with our 2019 Diamond Series event!





ALPHA PHI

Founded at UVA: 1978

Location: 518 17th St NW

Colors: Silver and Bourdeaux

Symbol: Ivy Leaf

Nickname: APhi

Philanthropy: The Alpha Phi Foundations

Minimum GPA: 2.5

Scholarships: 3 opportunities per semester

Catering: Out of house dues include one weekly meal and have the option to opt into meal plan with Monday - Thursday dinner and Friday Brunch, or Monday - Thursday lunch and dinner with Friday brunch. House girls receive lunch and dinner Monday - Thursday, brunch Friday.

Dues:

New Member Fees: \$1417.50

Out of House Dues: \$1011.53/Fall; \$875.00/Spring

In House Dues: \$4761.53/Fall; \$4625.00/Spring

Fun fact: Our Thankful 5k is the largest 5k on grounds!



CHI OMEGA

Founded at UVA: June 4, 1927

Location: 123 Chancellor Street

Colors: Cardinal and Straw

Symbol: Owl, Skull and Crossbones

Nickname: Chi O

Philanthropy: Make-a-Wish Foundation

Minimum GPA: 2.0

Scholarships: Betsey Feinour Scholarship (\$1,000), Mary Ann Roadheaver Scholarship, and the Julia Green Scholarship. In addition to these chapter scholarships, Chi Omega's national organization offers many scholarships found on the national Chi Omega website

Catering: Out of house members receive one meal plan per week. In house members receive three meals per week. Meal plan is required for all members, but exemptions may be granted for financial or dietary restrictions. The meal plan cost will be \$150-200 for the upcoming spring 2026 semester **and is not included in dues**

Dues:

New Member Fees: \$1400.00

Out of House Dues: \$935.00/Fall; \$725.00/Spring

In House Dues: \$745.00/Fall; \$535.00/Spring

Fun fact: Our house is closest to Bodos and the Rotunda!





DELTA DELTA DETA

Founded at UVA: 1975

Location: 1537 Virginia Avenue

Colors: Blue, Silver, and Gold

Symbol: Dolphin

Nickname: Tri Delt

Philanthropy: St. Jude Children's Research Hospital

Minimum GPA: 2.5

Scholarships: National scholarships available

Catering: Out of house members receive 5 meals per week. In house members receive 13 meals per week.

Dues:

New Member Fees: \$1860.00

Out of House Dues: \$2130.00/Fall; \$2130.00/Spring

In House Dues: \$6117.00/Fall; \$6117.00/Spring

Fun fact: We raised \$15k for St. Jude in just 24 hours this year!



DELTA GAMMA

Founded at UVA: 1978

Location: 138 Madison Lane

Colors: Bronze, Pink, and Blue

Symbol: Anchor

Nickname: DG

Philanthropy: Service for Sight

Minimum GPA: 2.0

Scholarships: Nationally, Delta Gamma awards merit-based undergraduate scholarships on a competitive basis to qualified, initiated members pursuing undergraduate degrees. The Delta Gamma Foundations supports collegiate members who have proven financial need and student loan debt through our Sisters Helping Sisters: Need-Based Scholarships. Scholarships are awarded to qualified applicants on a first come, first served basis, as funds permit. Crisis Grants help Delta Gamma sisters who find themselves in extreme, unexpected life circumstances. To apply for a Crisis Grant you must be an initiated member and in good standing with the Fraternity. Crisis Grants are awarded throughout the year, as funds permit.

Catering: Our meal plan is through College Chefs and if you sign up you can choose to have lunch OR dinner Monday - Friday at the house, and Saturday Brunch is included. You can participate in the meal plan if you live in or out of the house.

Dues:

New Member Fees: \$826.00

Out of House Dues: \$650.00/Fall; \$492.00/Spring

In House Dues: \$4980.00/Fall; \$4822.00/Spring

Fun fact: Delta Gamma became the first women's fraternal group to establish their own independent philanthropic foundation in 1951!





DELTA ZETA

Founded at UVA: November 22, 1977

Location: 150 Chancellor Street

Colors: Rose and Green

Symbol: Roman Lamp

Nickname: DZ

Philanthropy: The Starkey Hearing Foundations

Minimum GPA: 2.7

Scholarships: The Delta Zeta Foundation awards scholarships in recognition of academic excellence and financial need. In addition to assisting undergraduate members, scholarships are also available to graduate students and alumnae returning to school.

Catering: Out-of-house girls get two meals a week, in-house girls get lunch and dinner Monday - Thursday and a Friday brunch.

Dues:

New Member Fees: \$1111.00

Out of House Dues: \$1104.00/Fall; \$1104.00/Spring

In House Dues: \$6384.00/Fall; \$6384.00/Spring

Fun fact: Actress and comedian Tina Fey was a DZ when she attended UVA!



KAPPA ALPHA THETA

Founded at UVA: 1976

Location: 127 Chancellor Street

Colors: Black and Gold

Symbol: Kite

Nickname: Theta

Philanthropy: CASA (Court Appointed Special Advocates) and One Love Foundation

Minimum GPA: 2.7

Catering: The meal plan is included in dues. Girls living in the house get 9 meals per week (lunch and dinner Monday - Thursday, brunch Friday) and girls out of the house get 5 meals per week.

Dues:

New Member Fees: \$1818.00

Out of House Dues: \$1618.00/Fall; \$1429.00/Spring

In House Dues: \$5383.00/Fall; \$5194.00/Spring

Fun fact: Theta alumni were one of the biggest donors to the rotunda remodel.





KAPPA DELTA

Founded at UVA: 1932

Location: 136 Chancellor Street

Colors: Olive Green and Pearl White

Symbol: Nautilus Shell

Nickname: KD

Philanthropy: Girl Scouts, Prevent Child Abuse America, SARA

Minimum GPA: 2.5

Scholarships: National Kappa Delta Scholarships, Beta Alpha New Member and Current Member Scholarships

Catering: House girls have a minimum of three meals a week and non-house girls can opt in to as many or few meals as they please.

Dues:

New Member Fees: \$1305.00

Out of House Dues: \$755.00/Fall; \$755.00/Spring

In House Dues: \$517.00/Fall; \$517.00/Spring

Fun fact: Since 1983, collegiate alumni and chapters have raised over \$20 million through Shamrock events!



KAPPA KAPPA GAMMA

Founded at UVA: 1976

Location: 503 Rugby Road

Colors: Dark Blue and Light Blue

Symbol: Fleur-de-lis, Key, Owl

Nickname: Kappa

Philanthropy: We partner locally with The Women's Initiative. Through the Kappa Foundation, we also partner nationally with Active Minds, JED Foundation, Mental Health America (MHA), National Alliance on mental Illness (NAMI), National Eating Disorders Association, and JACK.org. Specifically, our chapter has chosen to support Mental Health America through our fundraising events. Kappa is also proud to announce our new partnership with Talkspace to provide free access to current members and discounted access to our graduates.

Minimum GPA: 2.7

Scholarships: KKG Financial Aid Program through the UVA alumni association - it's a scholarship fund financed entirely by our members/members parents/alumni, and anyone can apply since we don't want dues to be a barrier for membership.

Dues:

New Member Fees: \$3153.00

Out of House Dues: \$2903.00/Fall; \$2655.00/Spring

In House Dues: \$998.00/Fall; \$750.00/Spring

Fun fact: We moved into a completely renovated home in 2022 at 503 Rugby Road!





PI BETA PHI

Founded at UVA: 1975

Location: 1509 Grady Ave

Colors: Wine and Silver Blue

Symbol: Arrow

Nickname: Pi Phi

Philanthropy: Read>Lead>Achieve (national philanthropy to promote childhood literacy), and Miles for Margaret (a 5k in honor of our sister Margaret Lowe who passed away).

Minimum GPA: 2.5

Scholarships: Pi Beta Phi Foundation Scholarship

Catering: House members receive lunch and dinner Monday - Thursday and brunch Friday

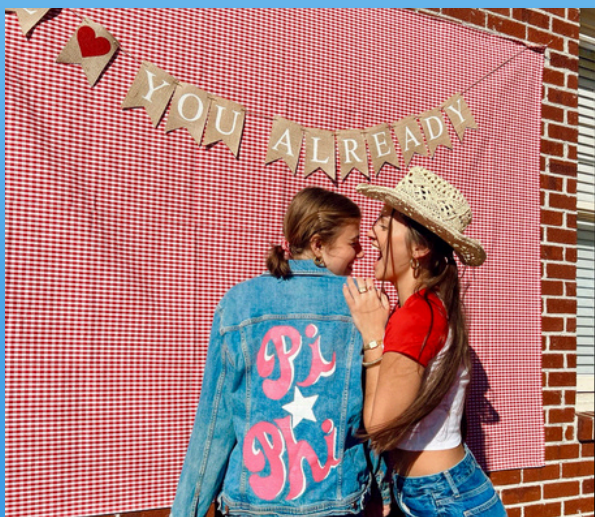
Dues:

New Member Fees: \$1449.00

Out of House Dues: \$1041.00/Fall; \$1009.00/Spring

In House Dues: \$5848.00/Fall; \$5816.00/Spring

Fun fact: Pi Phi was the first national sorority to be established at UVA after the university became coeducational!



SIGMA KAPPA

Founded at UVA: 1987

Location: 503 16th St NW

Colors: Lavender and Maroon

Symbol: Dove

Nickname: SK

Philanthropy: We partner with the Alzheimer's Association throughout the year to raise awareness and funds in support of Alzheimer's research. As a Chapter, we actively participate in the Charlottesville Walk to End Alzheimer's, organize a kickball tournament, and engage in various fundraising efforts. Additionally, SK volunteers at Martha Jefferson House, a senior living community, to provide companionship to local residents.

Minimum GPA: 2.6

Scholarships: ISC Endowed Scholarships and National Sigma Kappa Scholarships

Catering: One meal a week for non-house residents, 3-5 meals per week for house residents (depending on the semester).

Dues:

New Member Fees: \$1463.00

Out of House Dues: \$872.00/Fall; \$850.00/Spring

In House Dues: \$3242.00/Fall; \$3220.00/Spring

Fun fact: We don't have a house mom!





SIGMA SIGMA SIGMA

Founded at UVA: 2016

Location: 1 University Court

Colors: Royal Purple and White

Symbol: Skull and Crossbones, Sailboat

Nickname: Sigma, Tri Sigma

Philanthropy: The Tri Sigma Foundation which raises money for the Robbie Page memorial fund and March of Dimes. Our main philanthropic initiative is Sigma Serves Children.

Minimum GPA: 2.7

Scholarships: Merit based scholarships through Nationals: \$500-\$2,000 and need based scholarships through Nationals.

Catering: One meal per week for all members which are included in dues.

Dues:

New Member Fees: \$1476.10

Out of House Dues: \$1416.25/Fall; \$1014.55/Spring

In House Dues: \$1323.55/Fall; \$924.94/Spring

Fun fact: Our house looks like the house from the movie Up!



ZETA TAU ALPHA

Founded at UVA: 1952

Location: 136 Madison Lane

Colors: Turquoise Blue and Steel Grey

Symbol: Five Pointed Crown

Nickname: Zeta

Philanthropy: Breast Cancer Education

Minimum GPA: 2.5

Scholarships: From the Zeta Foundation: Founders Grands, Recognition Scholarships, Achievement Scholarships, Service Scholarships, Endowed Scholarships with 4 designated chapter scholarships for \$2400 each.

Catering: Our meal plan is required for all members. New members get 1 meal per week while inducted members get 3 meals per week.

Dues:

New Member Fees: \$1342.00

Out of House Dues: \$1505.00/Fall; \$1501.00/Spring

In House Dues: \$4817.00/Fall; \$4813.00 /Spring

Fun fact: One of Zeta's symbols is a strawberry, and it symbolizes our social events as the founders' first social gathering was due to receiving a gift of strawberries.

